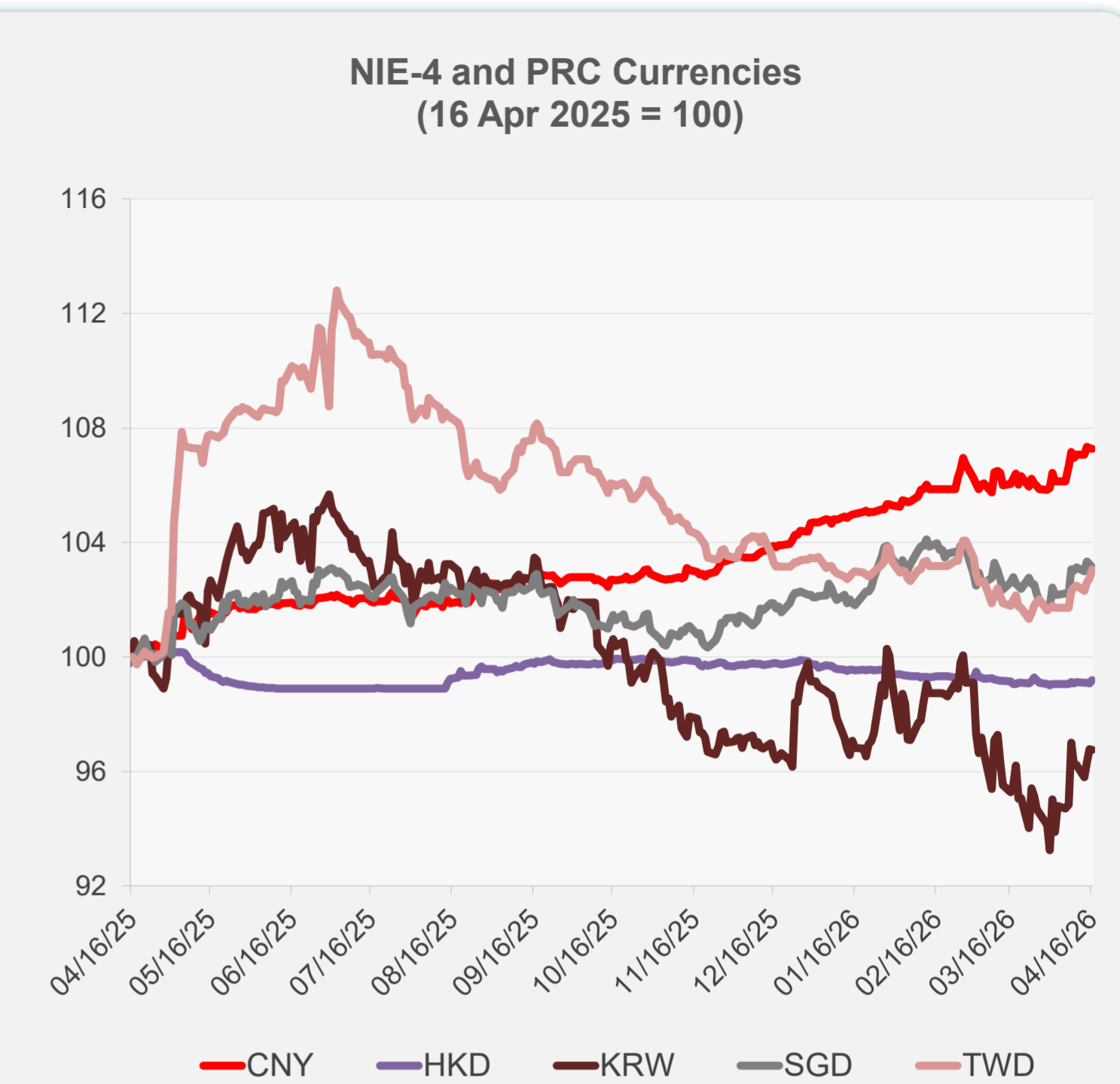
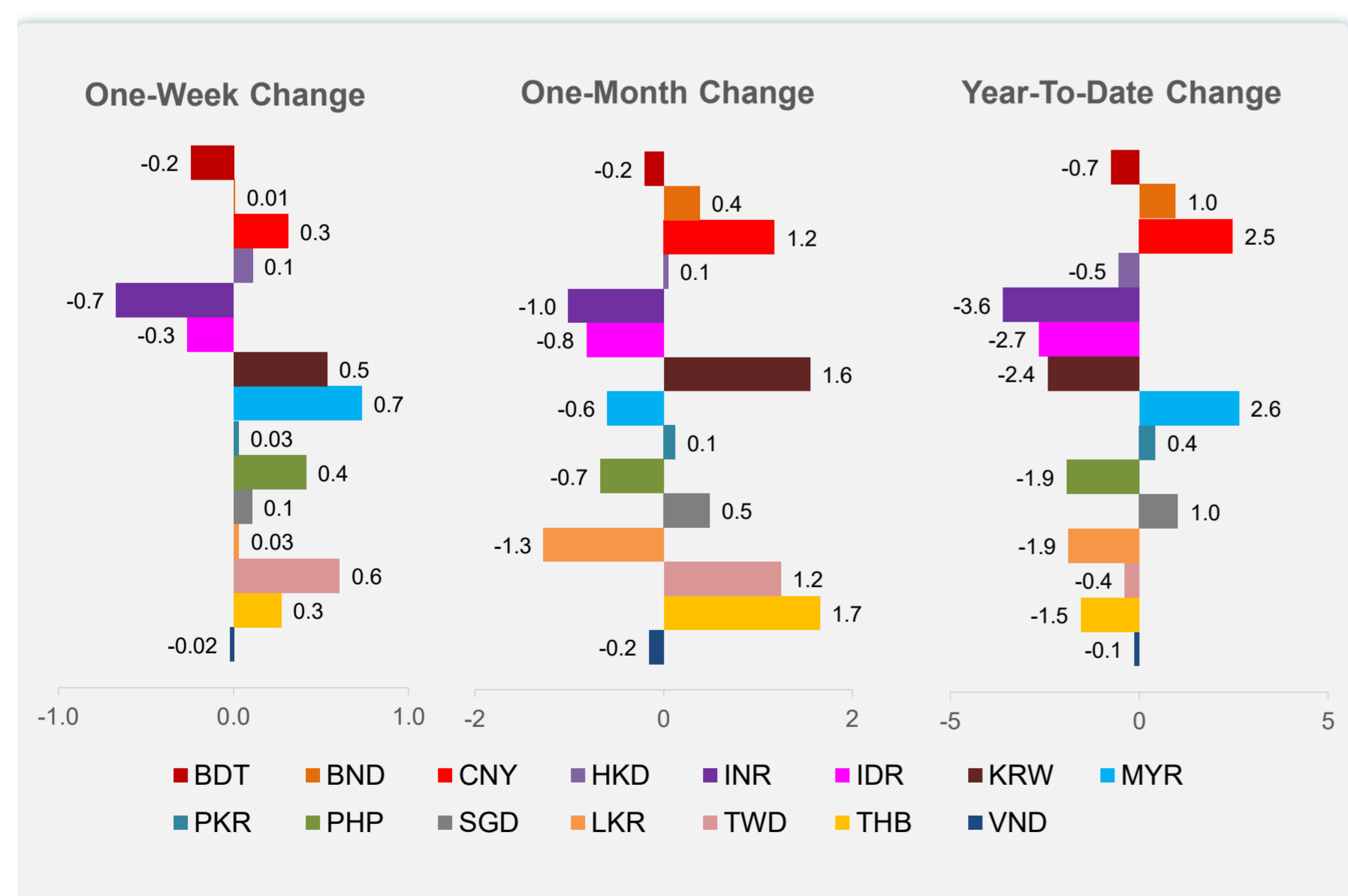
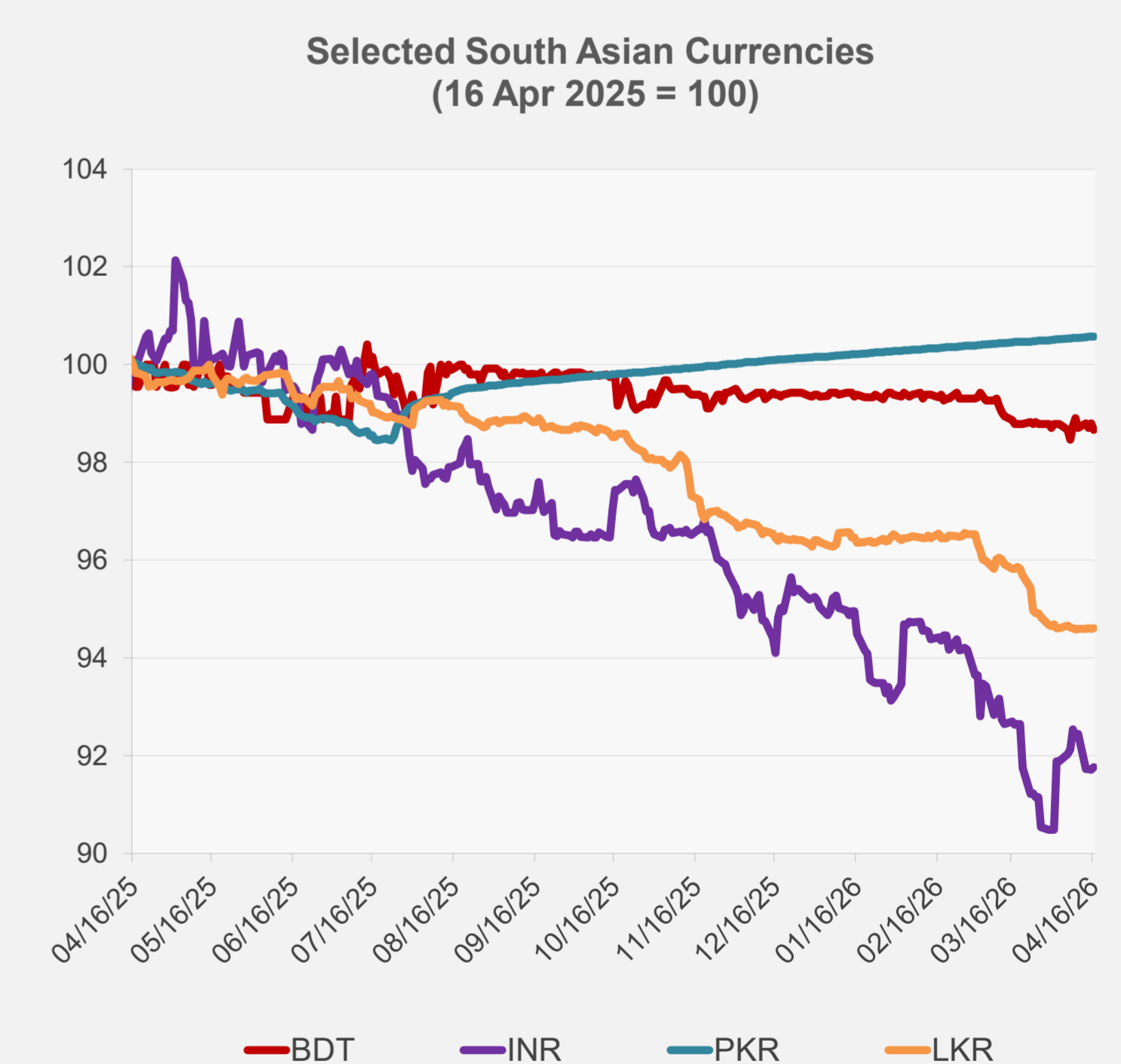
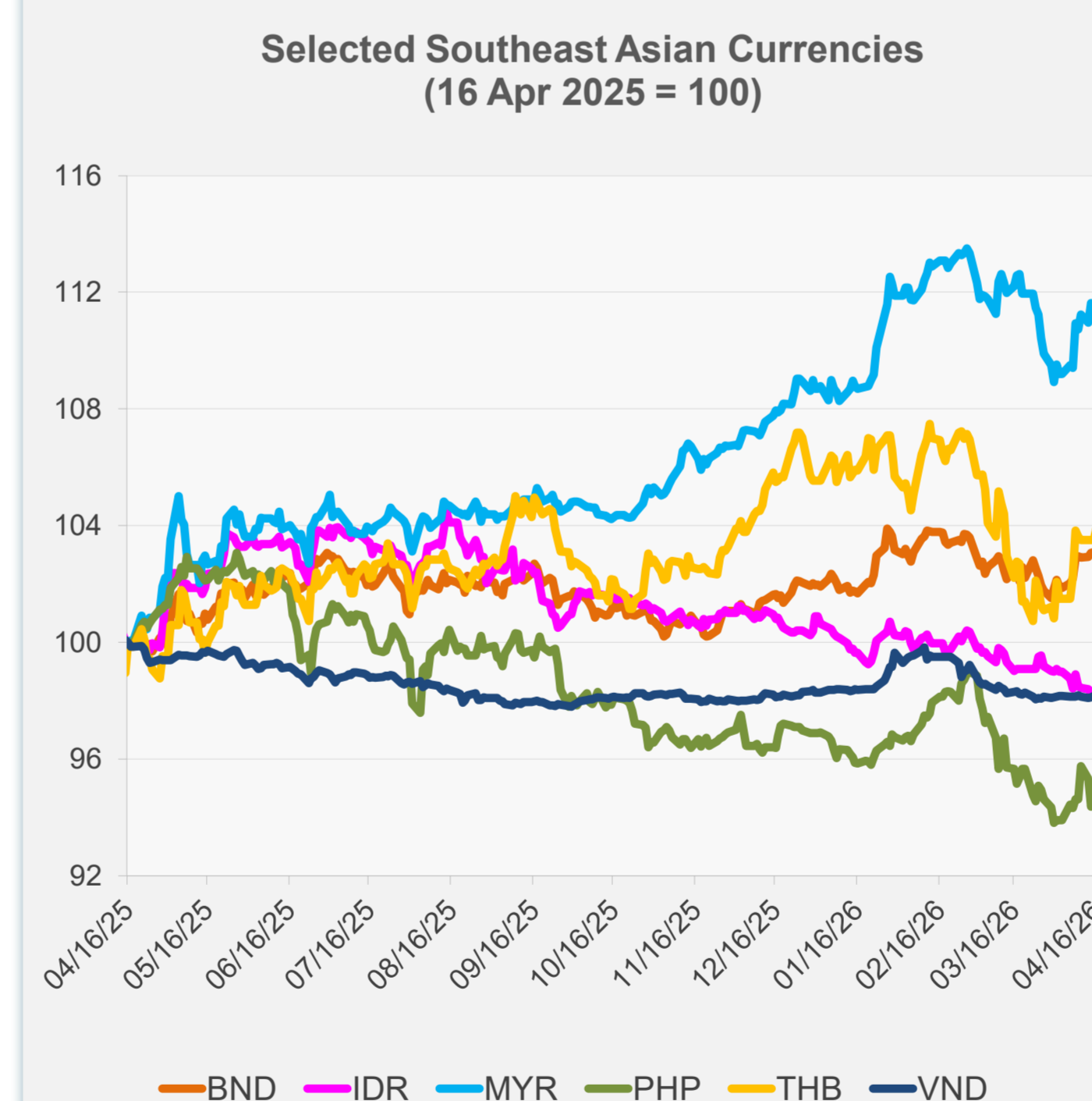


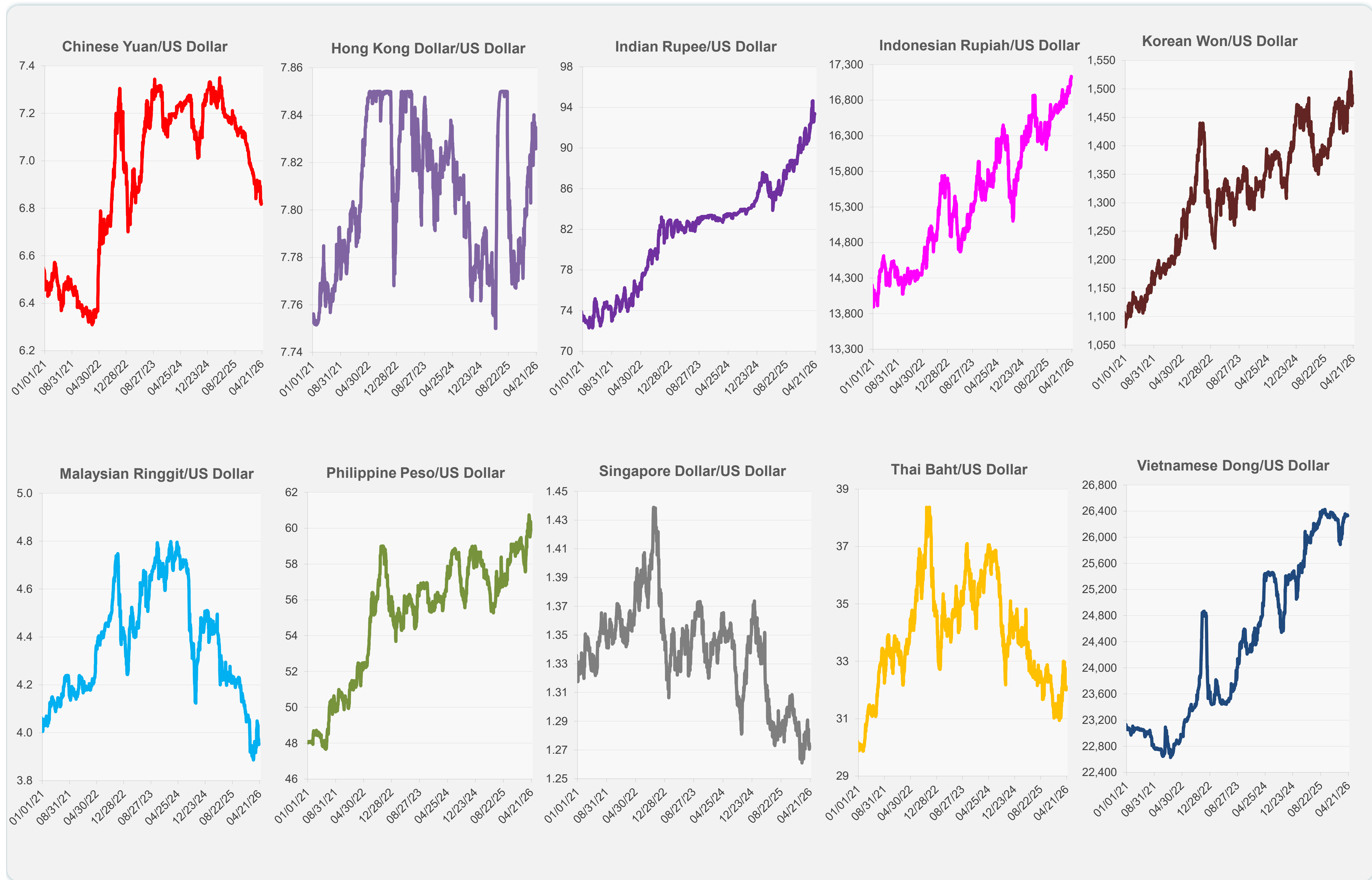
	Latest Closing	% change from Previous Day	% change from 01-Jan-26
Euro	0.85	-0.22	0.22
Japanese yen (JPY)	158.87	0.04	-1.82
Bangladeshi taka (BDT)	123.15	-0.14	-0.73
Brunei dollar (BND)	1.27	-0.13	0.95
Chinese yuan (CNY)	6.82	-0.02	2.47
Hong Kong dollar (HKD)	7.83	0.12	-0.54
Indian rupee (INR)	93.34	0.06	-3.60
Indonesian rupiah (IDR)	17,130.00	0.03	-2.66
Korean won (KRW)	1,474.60	-0.03	-2.41
Malaysian ringgit (MYR)	3.95	0.03	2.63
Pakistan rupee (PKR)	278.93	0.01	0.42
Philippine peso (PHP)	59.96	-0.16	-1.92
Singapore dollar (SGD)	1.27	-0.13	1.03
Sri Lanka rupee (LKR)	315.50	0.02	-1.87
Taipei,China NT dollar (TWD)	31.56	0.30	-0.37
Thai baht (THB)	32.00	0.38	-1.55
Vietnamese dong (VND)	26,330.00	0.00	-0.11



NIE = Newly Industrialized Economies



Note: Negative/Decreasing values indicate depreciation of local currency, and positive/increasing values indicate appreciation.
Source: ADB calculations using data from Bloomberg and Haver Analytics.

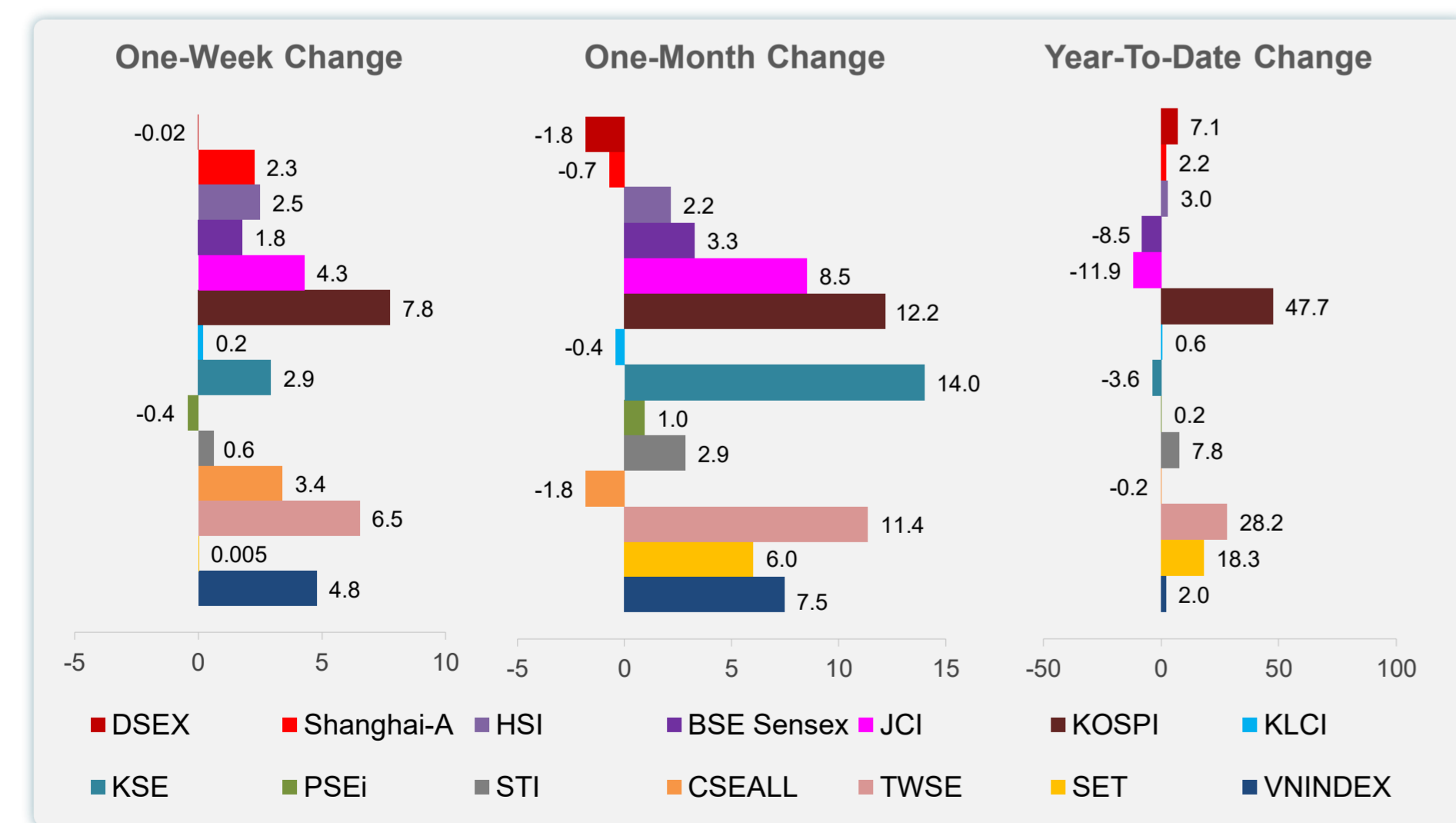
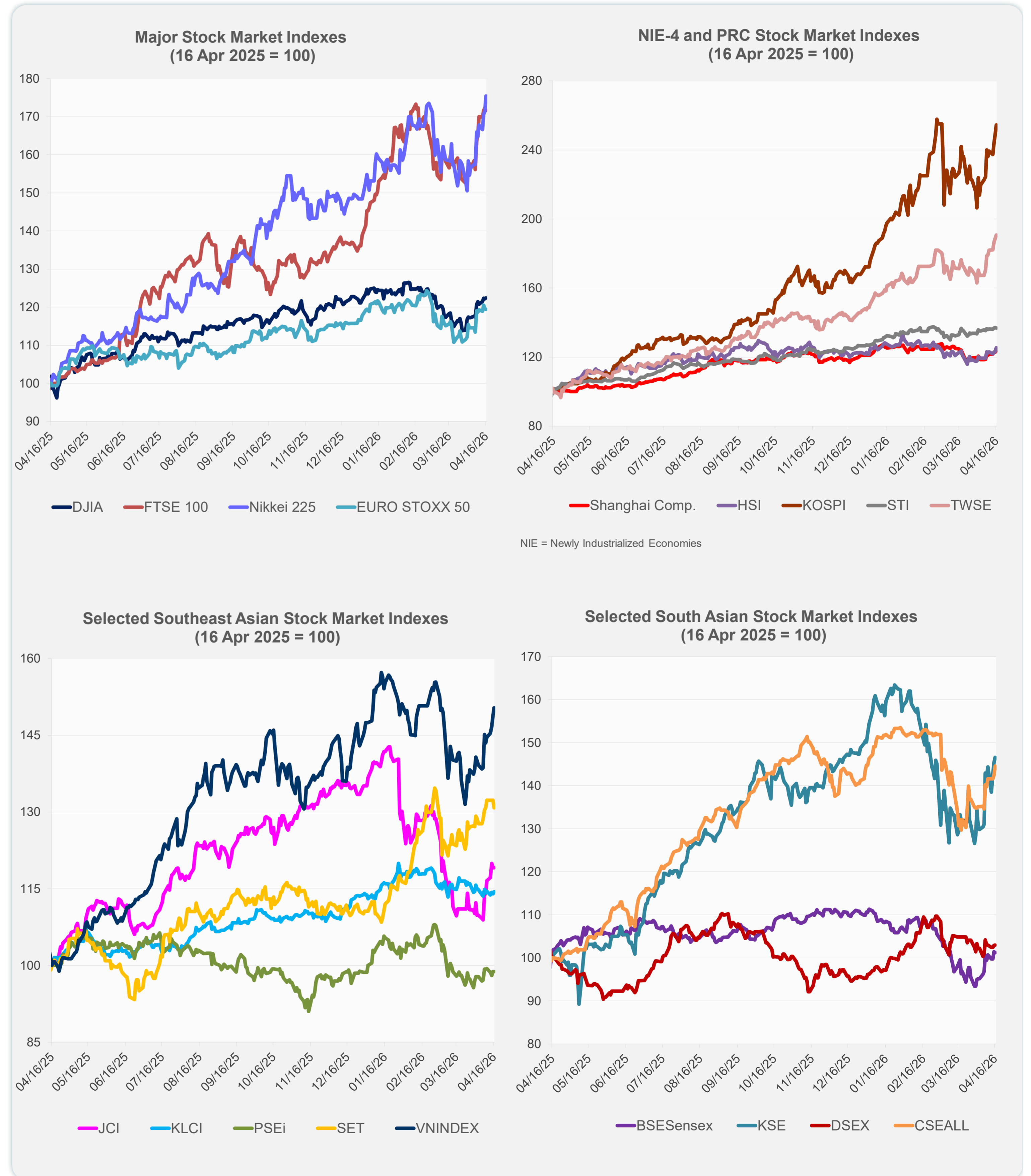


Source: Haver Analytics.

Daily Market Watch STOCK INDEXES

17 April 2026, 9:00 AM Manila

	Latest Closing	% change from Previous Day	% change from 01-Jan-26
US Dow Jones Ind Avg	48,578.72	0.24	1.07
US NASDAQ	24,102.70	0.36	3.70
US S&P 500	7,041.28	0.26	2.86
UK FTSE 100	14,201.05	-0.36	26.10
EURO STOXX 50	5,933.28	-0.12	2.45
Japan NIKKEI 225	59,518.34	2.38	18.23
Bangladesh DSEX	5,256.84	0.03	7.05
PRC Shanghai Comp.	4,055.55	0.70	2.18
Hong Kong, China HSI	26,394.26	1.72	2.98
India BSE Sensex	77,988.68	-0.16	-8.45
Indonesia JCI	7,621.38	-0.03	-11.86
Korea, Rep. of KOSPI	6,226.05	2.21	47.74
Malaysia KLCI	1,689.71	0.37	0.57
Pakistan KSE 100	170,096.30	0.85	-3.61
Philippines PSEi	6,063.69	0.01	0.18
Singapore STI	5,007.83	-0.27	7.78
Sri Lanka CSEALL	22,588.97	1.47	-0.16
Taipei, China TWSE	37,132.02	1.12	28.20
Thailand SET	1,489.73	-1.14	18.26
Viet Nam VNINDEX	1,819.83	1.07	1.98



Sources: ADB calculations using data from Bloomberg and CEIC Data Company.

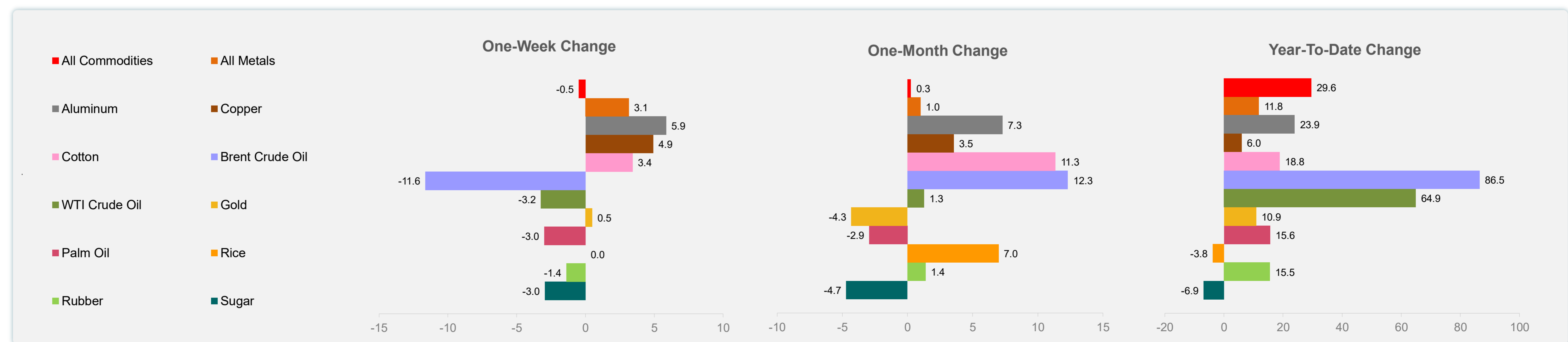
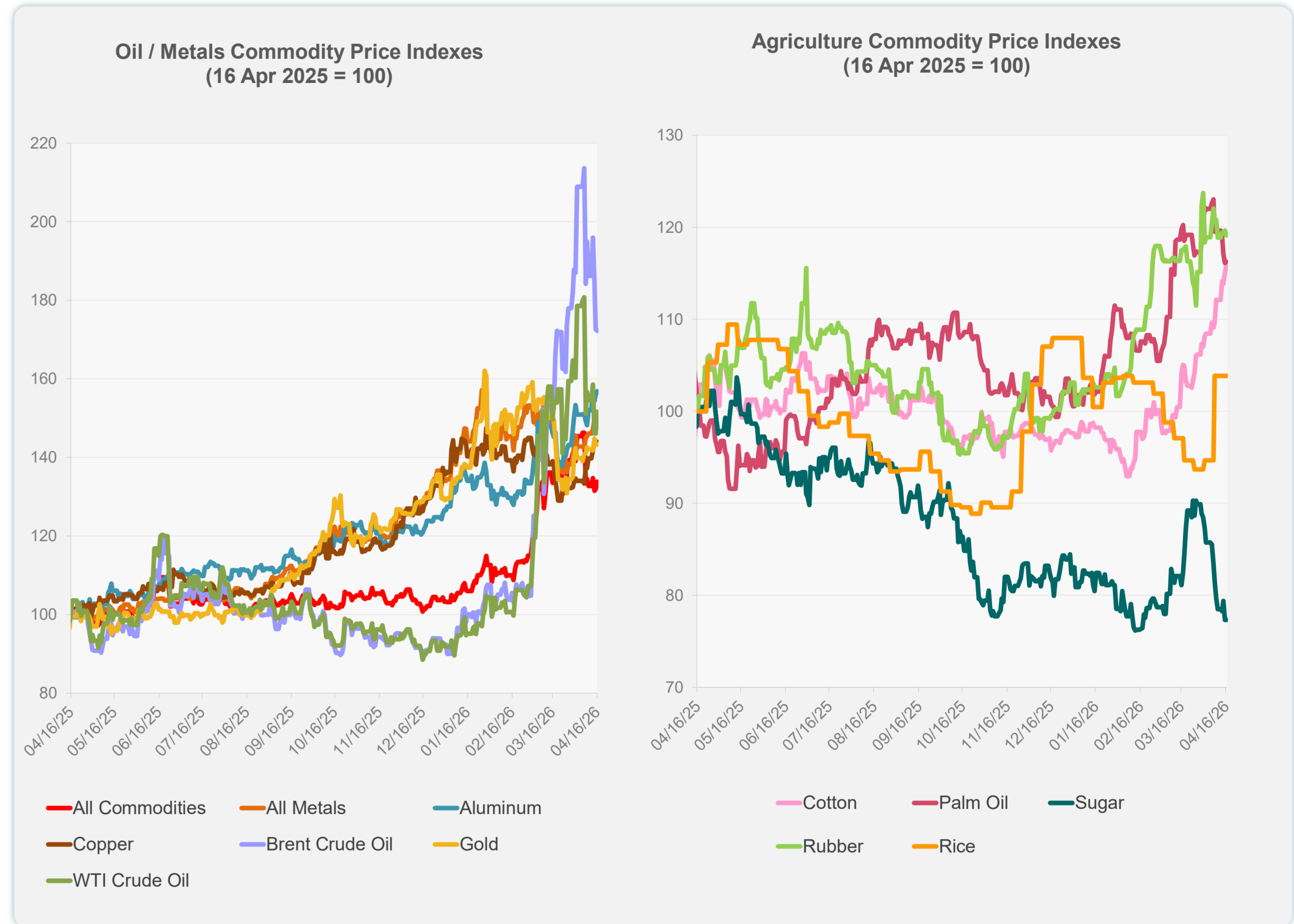


Sources: ADB calculations using data from Bloomberg and CEIC Data Company.

Daily Market Watch
COMMODITY PRICES

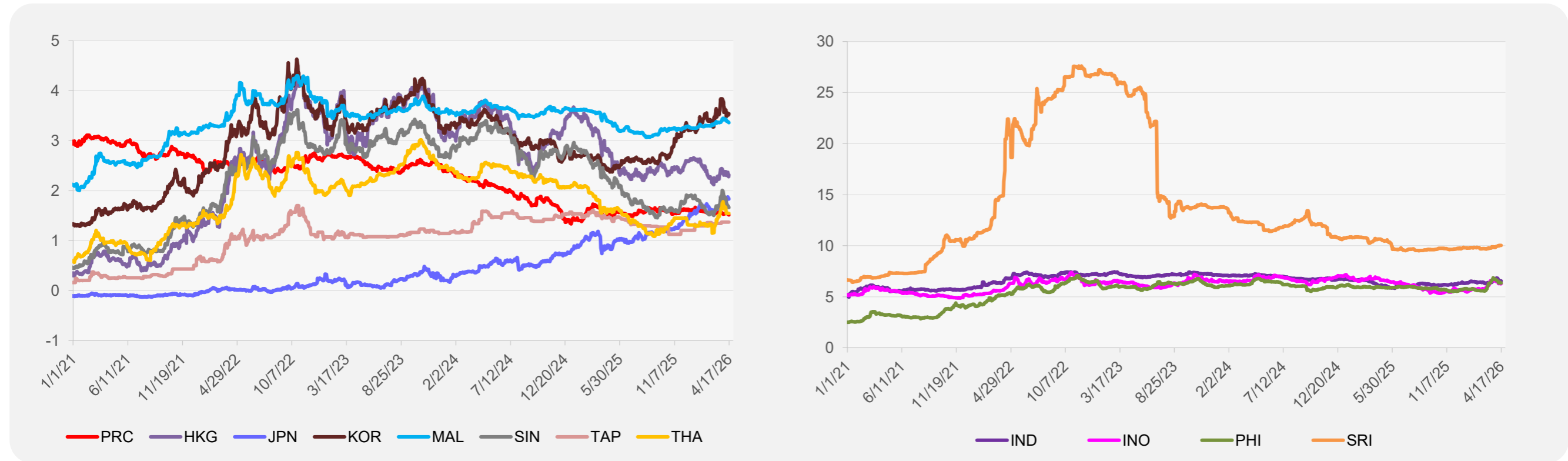
	Unit	Latest Closing	% change from Previous Day	% change from 01-Jan-26
S&P All Commodities	US\$	710.70	1.45	29.57
S&P All Metals	US\$	496.32	0.00	11.84
Aluminum	US\$/metric ton	3,678.45	0.53	23.94
Copper	US\$/metric ton	13,206.20	0.13	6.05
Cotton	US cents/lb	73.70	0.81	18.83
Brent Crude Oil	US\$/barrel	116.45	-0.24	86.48
WTI Crude Oil	US\$/barrel	94.69	3.72	64.91
Gold	US\$/troy oz	4,790.06	-0.02	10.90
Palm Oil	US\$/metric tonne	1,119.99	0.09	15.62
Rice ¹	US\$/metric ton	429.00	0.00	-3.81
Rubber ²	US\$/kg	248.40	-0.44	15.53
Sugar	US cents/lb	13.77	0.00	-6.90

¹ Latest closing price from 8 April 2026.
² Singapore Exchange, Ribbed Smoked Sheet Rubber.

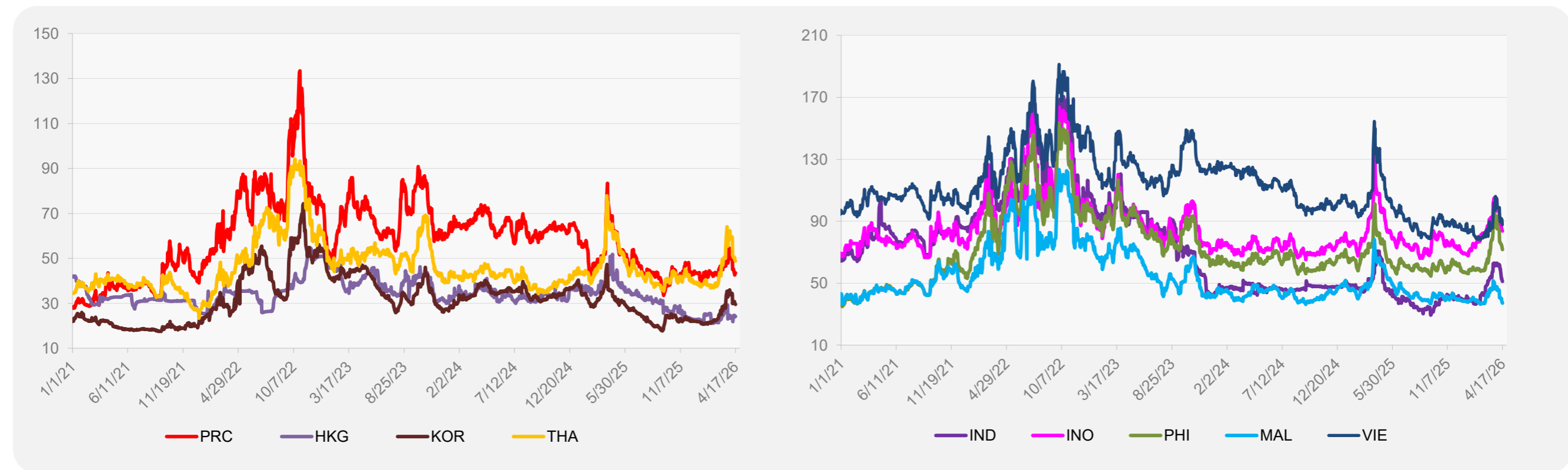


Source: ADB calculations using data from Bloomberg.

5-YEAR LOCAL CURRENCY GOVERNMENT BOND YIELDS (%)



5-YEAR CREDIT DEFAULT SWAP¹



¹ In USD and based on sovereign bonds.
Source: ADB calculations using data from Bloomberg.